

Supplementary Material

METHOD DEVELOPMENT AND VALIDATION OF GLUCOSE ESTIMATION IN CHEWABLE TABLETS BY RP-HPLC AND PROCESS VALIDATION

Content

1. **Figure S1.** Chromatogram of system precision
2. **Figure S2.** Chromatogram of method precision
3. **Figure S3.** Chromatogram of intermediate precision (standard injection)
4. **Figure S4.** Chromatogram of intermediate precision (sample injection)
5. **Figure S5.** Chromatogram of Accuracy
6. **Figure S6.** Chromatogram of Blend sample batch -1
7. **Figure S7.** Chromatogram of Blend sample batch -2
8. **Figure S8.** Chromatogram of Blend sample batch -3
9. **Figure S9.** Chromatogram of core tablets batch -1
10. **Figure S10.** Chromatogram of core tablets batch -2
11. **Figure S11.** Chromatogram of core tablets batch -3
12. **Figure S12.** Chromatogram of coated tablets batch -1
13. **Figure S13.** Chromatogram of coated tablets batch -2
14. **Table S1.** Sampling plan

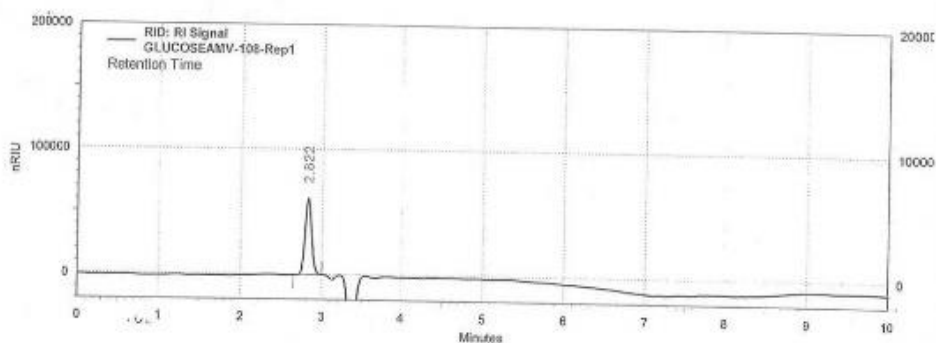


Figure S1. Chromatogram of system precision.

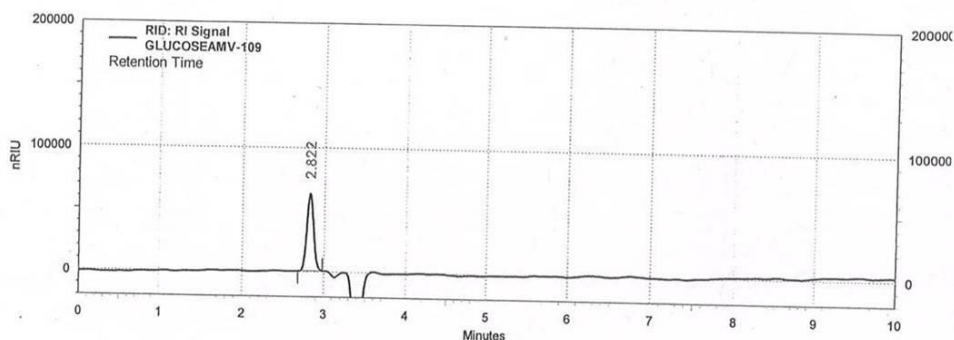


Figure S2. Chromatogram of method precision.

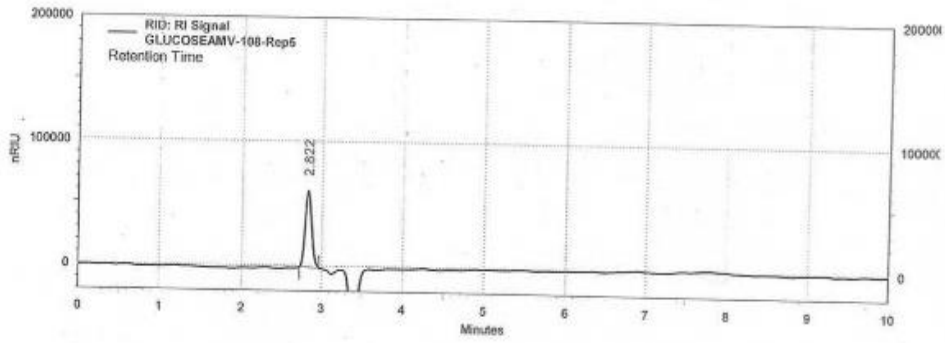


Figure S3. Chromatogram of intermediate precision (standard injection).

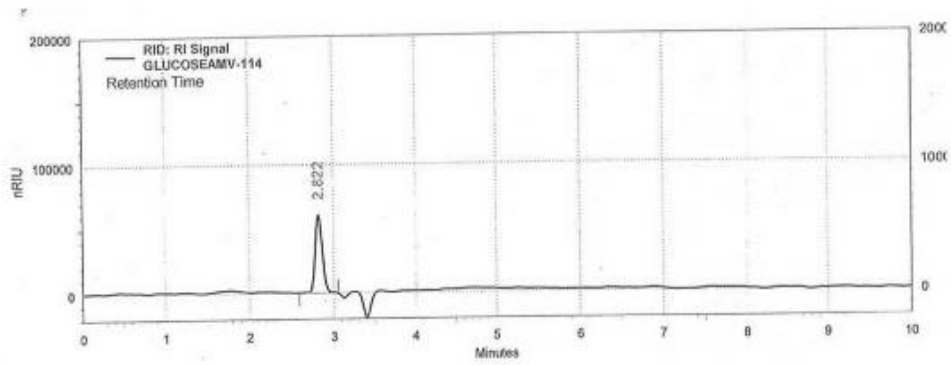


Figure S4. Chromatogram of intermediate precision (sample injection).

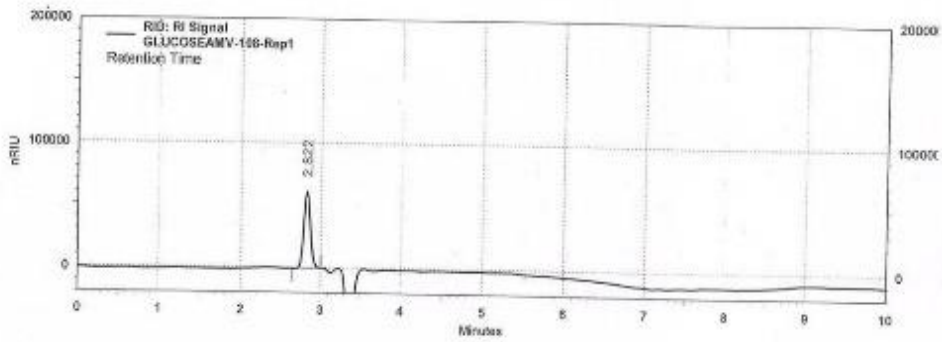


Figure S5. Chromatogram of accuracy.

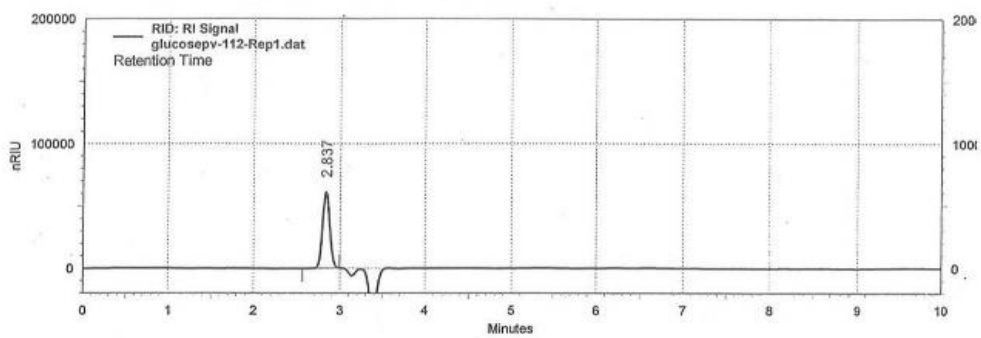


Figure S6. Chromatogram of blend sample batch -1.

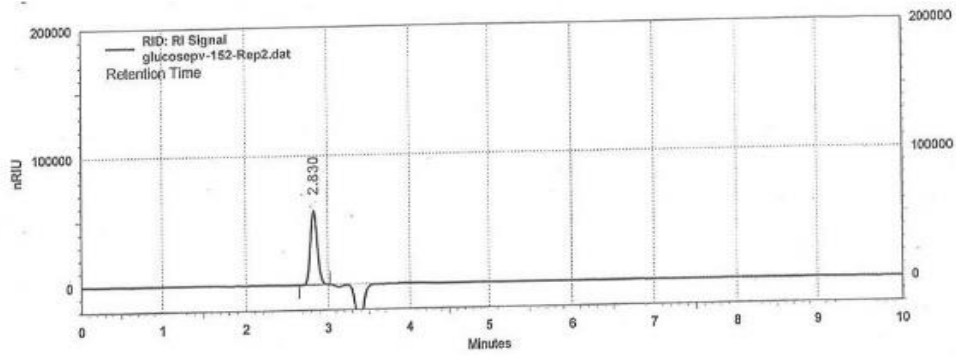


Figure S7. Chromatogram of blend sample batch -2.

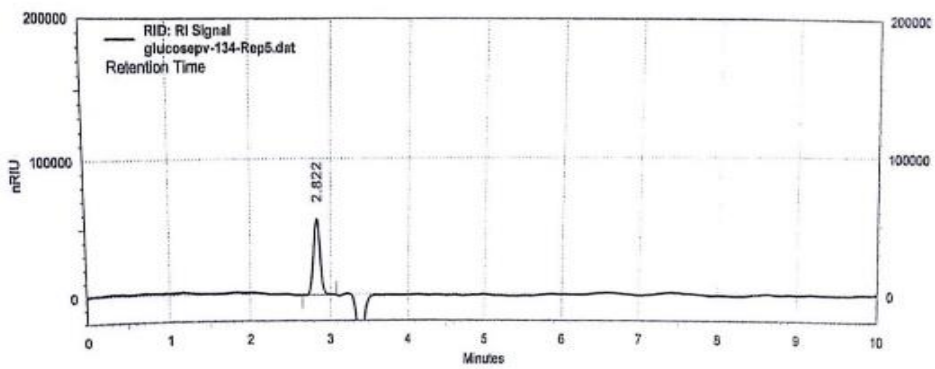


Figure S8. Chromatogram of blend sample batch -3.

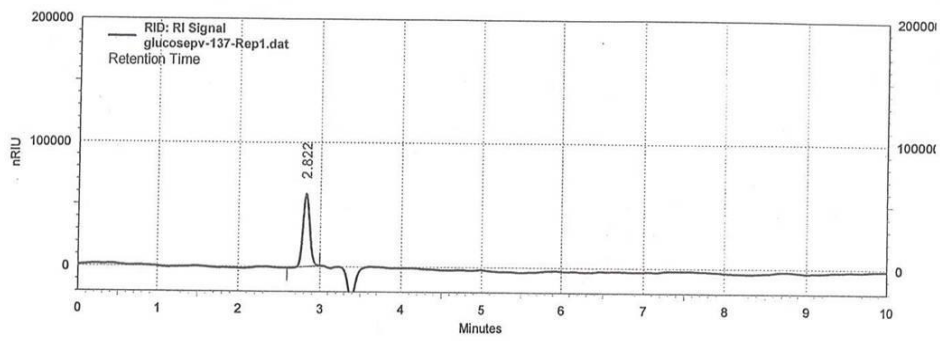


Figure S9. Chromatogram of core tablets batch -1.

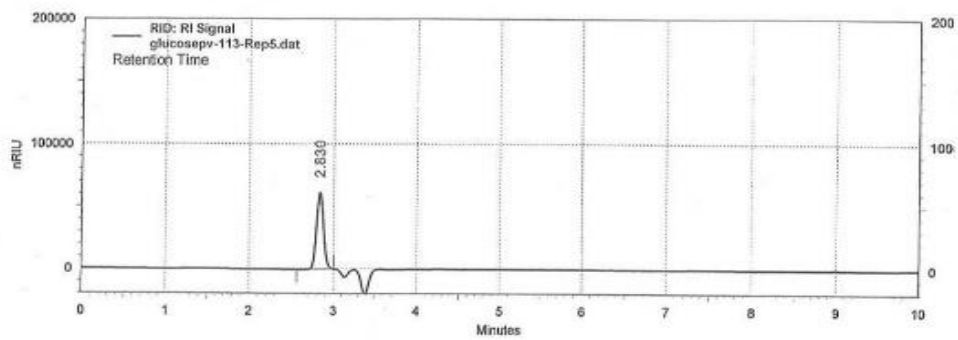


Figure S10. Chromatogram of core tablets batch -2.

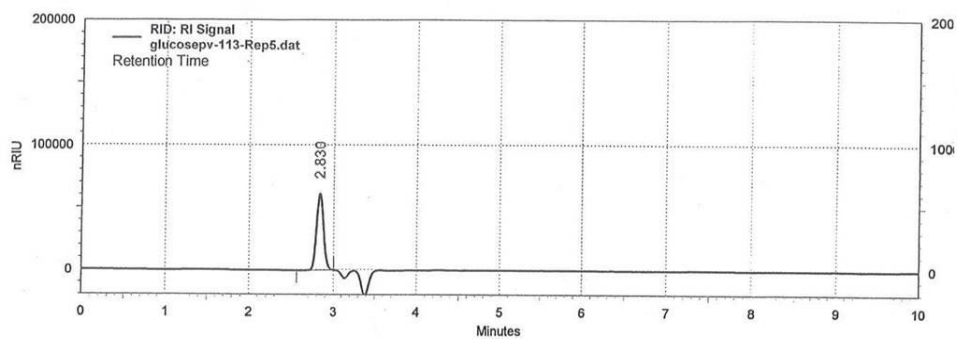


Figure S11. Chromatogram of core tablets batch -3.

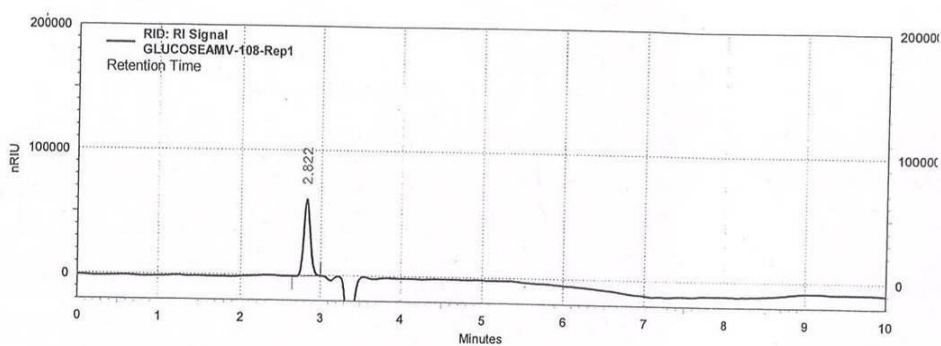


Figure S12. Chromatogram of coated tablets batch -1.

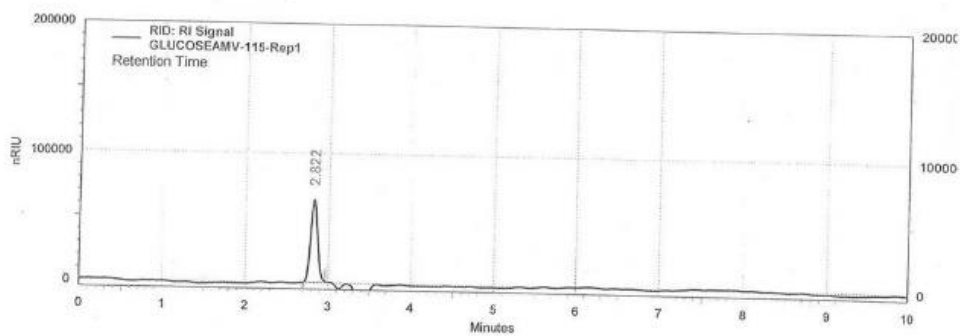


Figure S13. Chromatogram of coated tablets batch -2.

Table S1. Sampling plan

S. No	Step	Time/interval	Number of sample	Sampling quantity	Test to be carried out
1.	Blending	30 minutes	2 sets of samples from 9 locations 1 pooled sample	1g each 50g	Content uniformity of glucose Relative standard deviation between the 9 values is not more than 2.0% Identification, and Assay.
2.	Core tablets	Initial, middle and final stages during compression	50 tablets from each stage	150 tablets in total	Description, identification, Av.weight, and assay
3.	Coated tablets	After coating	50 tablets after coating	50 tablets	Description, identification, Av.weight, and Assay